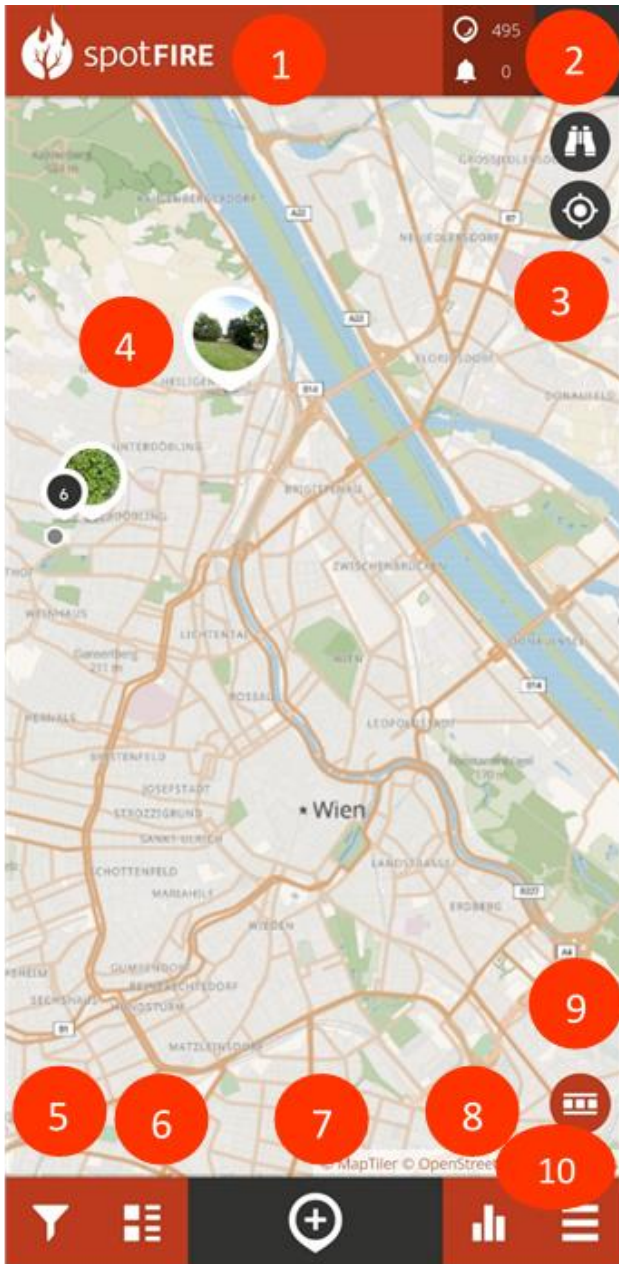


The spotFIRE App - Manual

General information about the Start Screen



1

When you click on the name of the App you will find information about the spotFIRE project and how to use the app.

2

Tapping on your profile picture or avatar will take you to your newsfeed, spots, badges and profile information.

3

When you click here, you can navigate to your current location, or you can search for a certain location or address.

4

Tap an existing spot on the map to add a new observation to the existing time series of observations.

5

Here you can filter the spots according to various criteria.

6

Tap here to see a list with the latest spots or to see the spots that are currently visible on the map.

7

Here you can create a new spot.

8

To discover the ranking of the most active citizen scientists and statistics on the different categories, tap here.

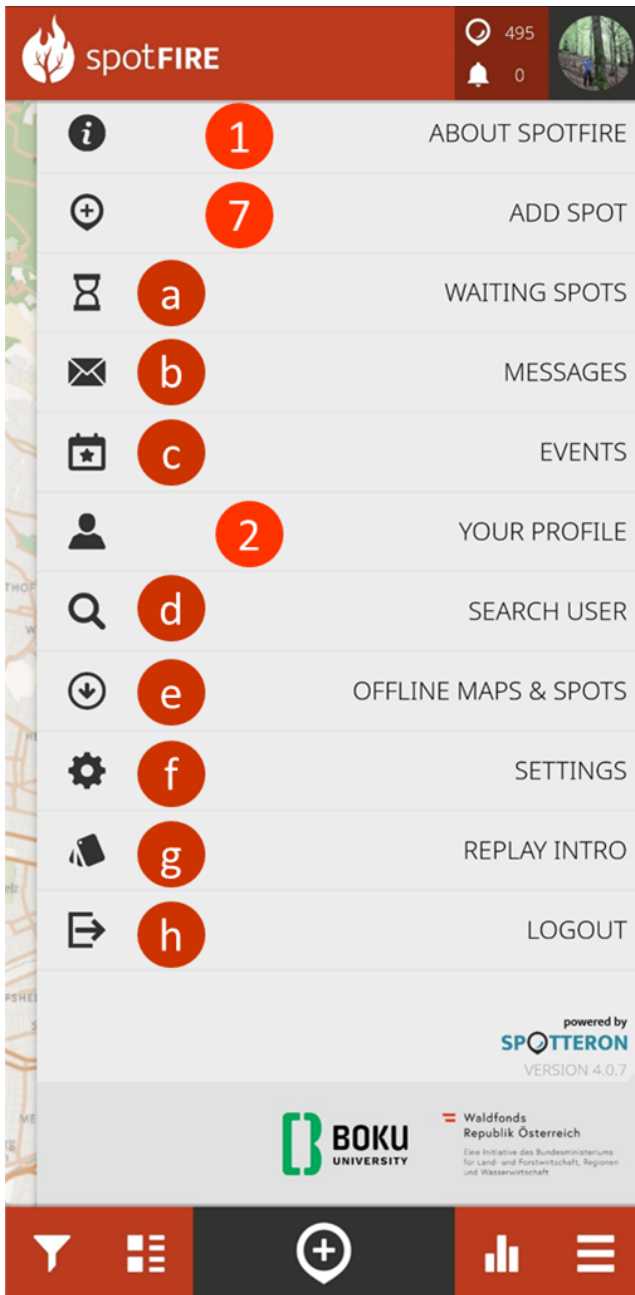
9

You have the possibility to visualize the distribution of the spots on the map in different ways by tapping here.

10

Here you find the main menu. After choosing the main menu, you have the following options:

General information about the Main Menu



a Here you can upload the observations that you made when you did not have an internet connection.

b Here you can access the messages sent by spotFIRE or Spotteron.

c Check if there are any events in the near future.

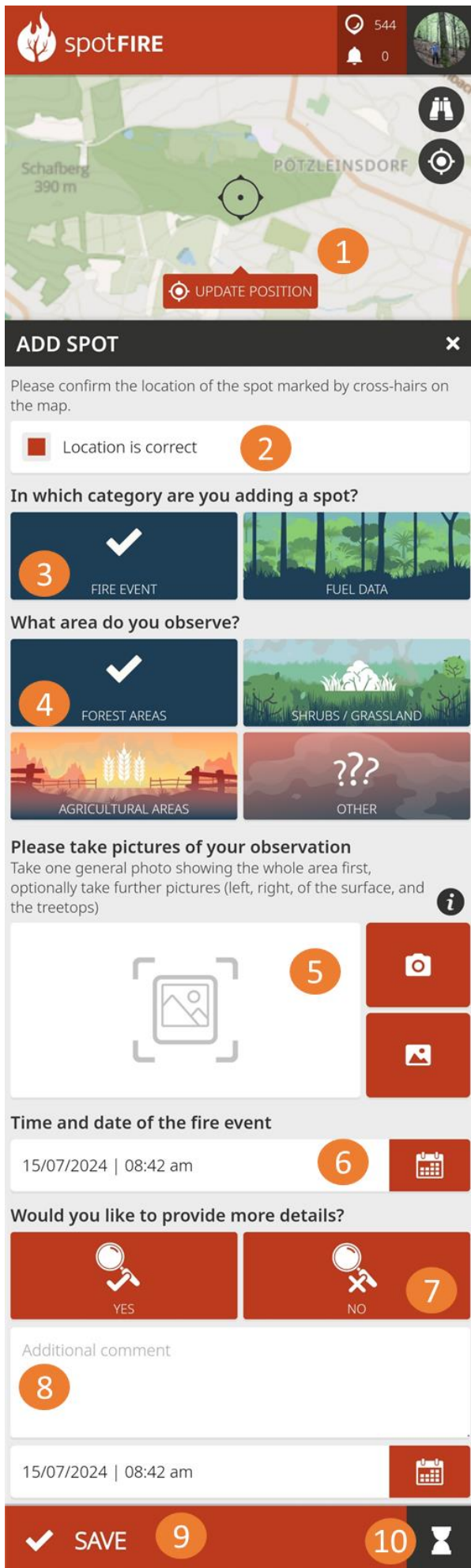
d Search for other citizen scientists.

e Download map sections or spots for offline use.

f In the settings, you can change the language and the background map, request your data or delete your profile.

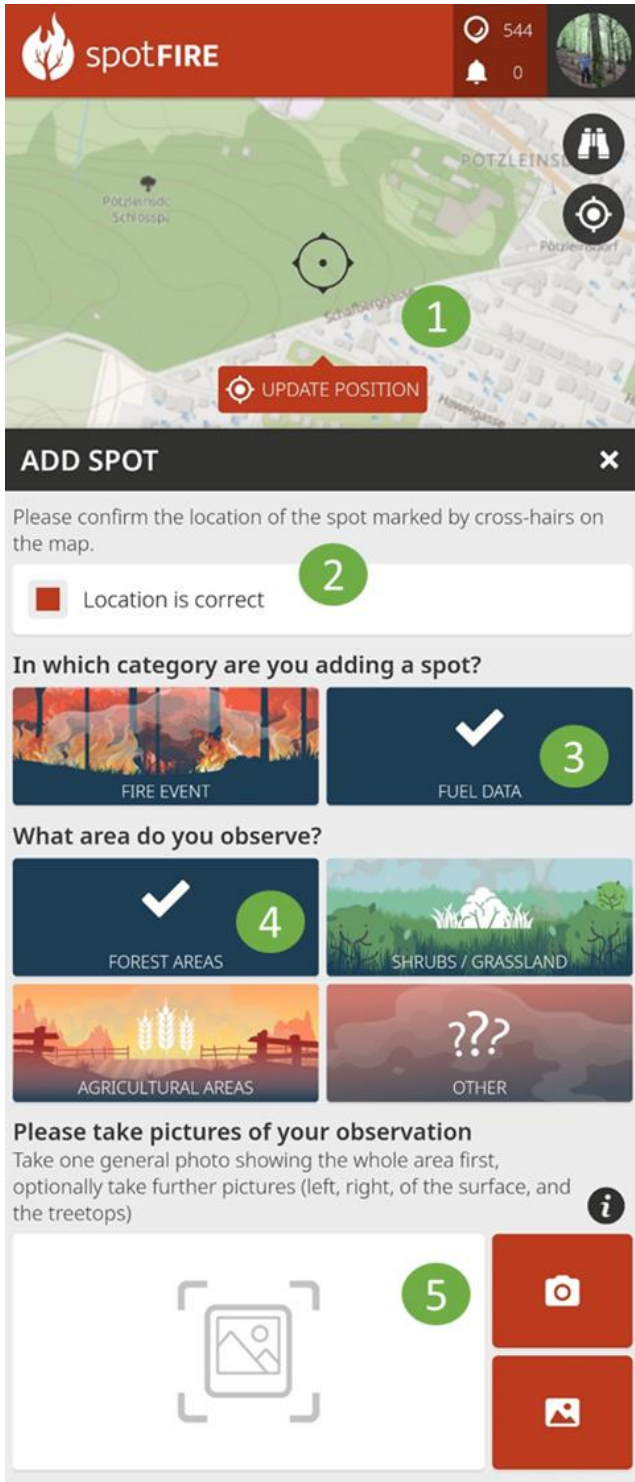
g Here you can watch the general intro slides about the purpose of the spotFIRE APP again which contains important information.

h Here you can log out (your profile will not be deleted).



Here, you can find a step-by-step description of creating a new spot in the FIRE EVENT category.

- 1 Click the button "UPDATE POSITION" to ensure the location of the crosshairs matches your current location. If you are observing a point far away from your current location, drag the crosshairs to the correct location.
- 2 Confirm that the observation position is correct.
- 3 Choose FIRE EVENT.
- 4 Choose the current land use status where you are making the observations.
- 5 Take photos at the observation location in different directions (whole area, left, right, surface, and treetops). This way, other citizen scientists and authorities can see exactly what information you provide.
- 6 Choose the exact time you make your observations.
- 7 If you want to provide more detailed information, you can choose the YES option.
- 8 Enter any additional comments or descriptions of the spot's location.
- 9 Save your observation.
- 10 If you are not connected to the internet, tap the hourglass. Your observation will be saved under "waiting spots" and you can upload it later when you have an internet connection.



Here, you can find a step-by-step description of creating a new spot in the FUEL DATA category.

- 1 Click the button "UPDATE POSITION" to ensure the location of the crosshairs matches your current location. If you observe a point far away from your current location, drag the crosshairs to the correct location.
- 2 Confirm that the observation position is correct.
- 3 Choose FUEL DATA.
- 4 Choose the current land use status where you are making the observations.
- 5 Take photos at the observation location in different directions (whole area, left, right, surface, and treetops). This way, other citizen scientists and authorities can see exactly what information you provide.

Describe the main surface fuel i

GRASS	SHRUBS / UNDERSTORY	SLASH-BLOWDOWN
TIMBER-LITTER	MOSS	OTHER

Continuity of the flammable vegetation
Estimate the percentage of the burnable surface fuel within a 5m radius i

<20%	20-40%	40-60%	60-80%	>80%
------	--------	--------	--------	------

Continuity of large woody debris
Estimate the percentage of the large woody debris within a 5m radius i

<20%	20-40%	40-60%	60-80%	>80%
------	--------	--------	--------	------

Are there ladder fuels present within sight? i

EVERYWHERE	ONLY PARTLY	RARELY	NOT AT ALL
------------	-------------	--------	------------

How likely is an ignition of the fuel at this site?

VERY HIGH	HIGH	LOW	VERY LOW
-----------	------	-----	----------

Briefly describe the location.

Location description

Additional comment

15/07/2024 | 08:44 am

SAVE

- 6 Choose the main surface fuel at the location you observe
- 7 Estimate the continuity of flammable vegetation at the location. Imagine a circle with a radius of 5 meters around the location and determine the most appropriate percentage.
- 8 Estimate the continuity of large woody debris at the location. Imagine a circle with a radius of 5 meters around the location and determine the most appropriate percentage.
- 9 Choose the level of ladder fuels appearance
- 10 Estimate the potential for ignition of the fuel at this site.
- 11 Briefly describe the location
- 12 Enter any additional comments or descriptions of the spot's location.
- 13 Save your observation.
- 14 If you are not connected to the internet, tap the hourglass. Your observation will be saved under "waiting spots" and you can upload it later when you have an internet connection.